

NEW



 **EQUITONE**  
Fibre cement facade materials

EQUITONE [materia]

[www.equitone.com](http://www.equitone.com)

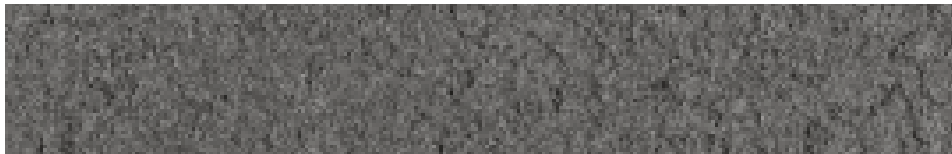
# EQUITONE [materia]

EQUITONE [materia] is a through coloured facade material that accentuates the beauty of fibre cement. The material encompasses the characteristics of cement, whereas the fibres render its surface textured yet velvety. The ever-changing atmosphere, gives the material natural subtle shade variations. The material comes in a large panel size and can be transformed into any size or shape in the workshop or on site.

## DIMENSIONS

8 mm	1250 mm	2500 - 3100 mm
------	---------	----------------

Available in 2 colours:



MA400




MA200





 **EQUITONE**  
Fibre cement facade materials



[equitone.com](http://equitone.com)  
[pinterest.com/equitonefacade](https://pinterest.com/equitonefacade)