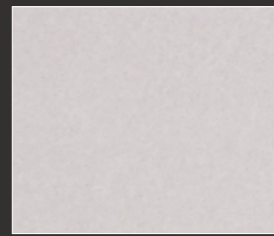


THROUGH-COLOURED



N162



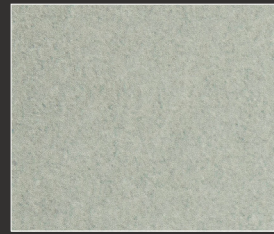
N161



N891



N281



N154



N163



N892



N251



N861



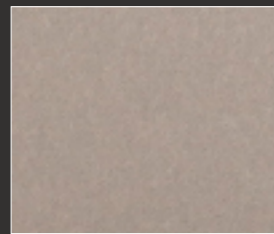
N211



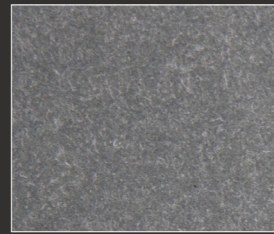
N250



N073



N961



N252

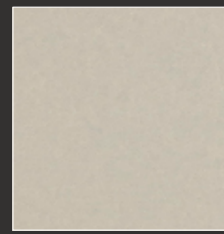


N294

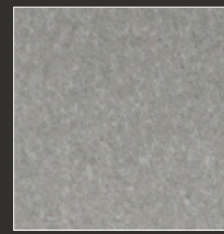


N074

SPECIAL COLOURS



N661



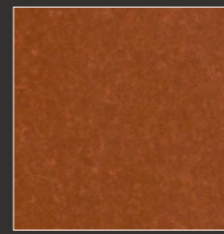
N 593



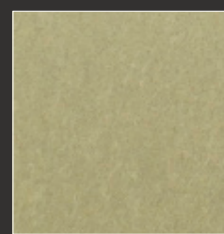
N411



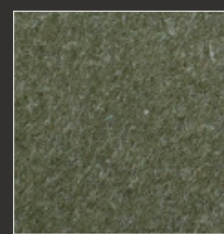
N991



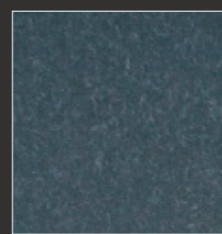
N331



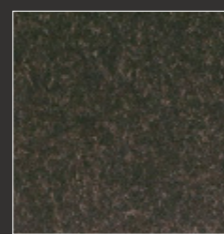
N662



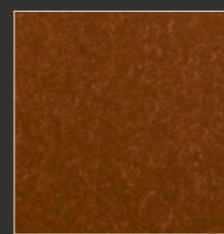
N594



N412



N972



N359

EQUITONE [natura]

EQUITONE [natura] is a through-coloured facade material. Every EQUITONE [natura] panel is unique, subtly displaying the raw texture of the core eternit fibre cement material. The material comes in a large panel size and can be transformed into any size or shape in the workshop or on site. No matter what design options you explore, EQUITONE's through-coloured nature guarantees crisp, monolithic details.

T x W x L mm	Weight kg/m ²
8/12 x 1280 x 2530	15,4/23,1
8/12 x 1280 x 3130	15,4/23,1

Approximately ±15mm needs to be trimmed from the untrimmed panel to ensure correct squareness.

Please note that all cut edges need to be treated with Luko.

Light irregularities, faint spots and minor traces of the production process is characteristic for this transparent or colorglazed fibercement panel, with its unique material identity. Natura can be supplied with an antigraffiti surface [Pro] surface.