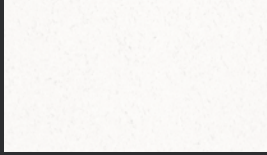
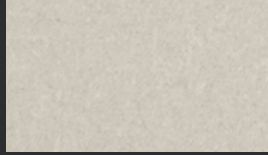


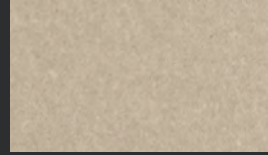
# THROUGH-COLOURED



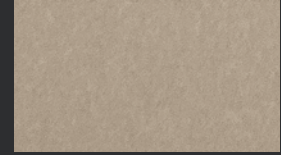
N164



N154



N861



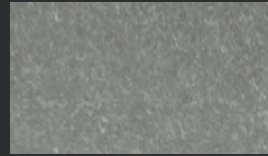
N961



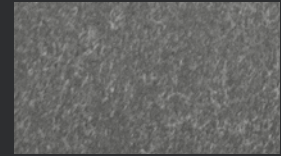
N162



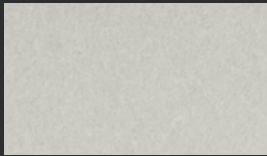
N163



N211



N252



N161



N892



N250



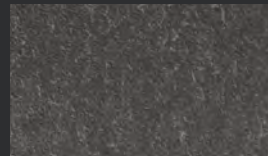
N294



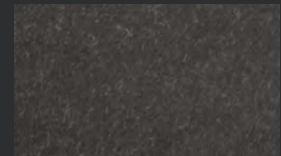
N891



N251

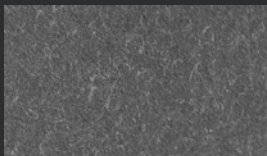


N073

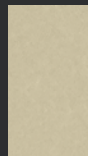


N074

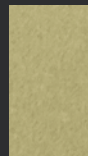
# SPECIAL COLOURS



N281



N661



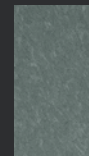
N662



N593



N594



N411



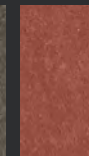
N412



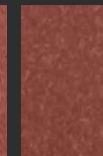
N991



N972



N331



N359

Other colours available on request, subject to minimum order quantities.

# EQUITONE [natura]

EQUITONE [natura] is a through-coloured facade material. Every EQUITONE [natura] panel is unique, subtly displaying the raw texture of the core fibre cement material. The material comes in a large panel size and can be transformed into any size or shape in the workshop or on site. No matter what design options you explore, EQUITONE's through-coloured nature guarantees crisp, monolithic details.